

Running UBA Software without a UBA

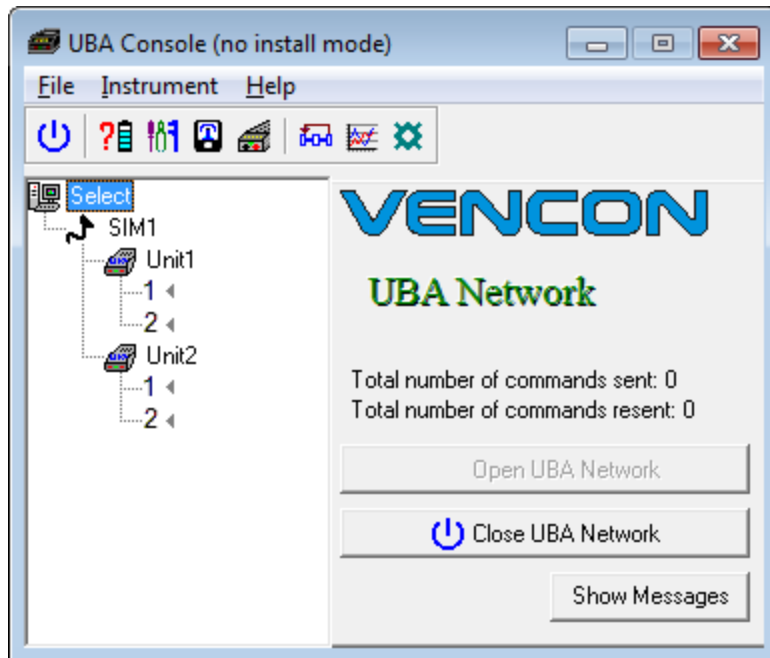
The UBA Software has the ability to simulate the operation of a UBA5 and has a "no install" option. Together these two features allow you to see how the UBA software runs without having a UBA5 and without having to install the software.

It simulates a UBA5 with a 600 Farad super capacitor connected to each battery channel input, which means a 1A charge or discharge current will result in a battery voltage rise or drop of 1V per 10min. We chose a capacitor as it's much simpler to implement than a battery.

The following files come with the no-install UBA simulation setup:

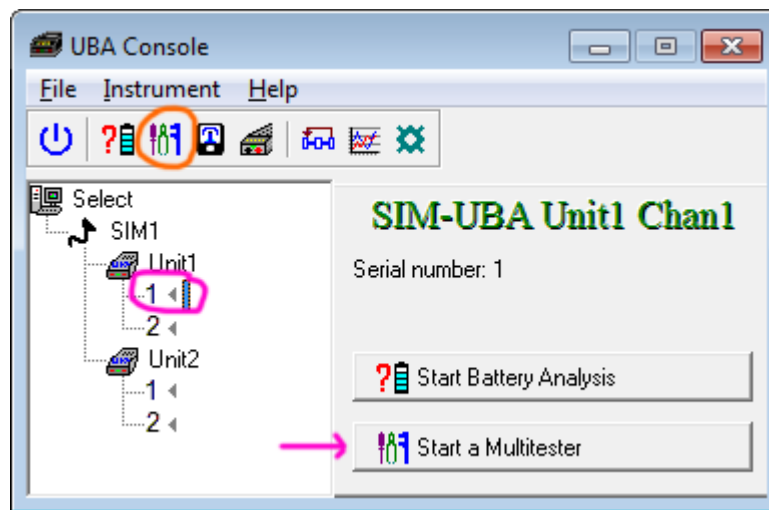
- UBA5.exe – the standard full feature executable that you run
- demo.id.ini – an ID file that contains our contact information
- demo.pf.ini – a profile file that sets up the S/W for simulation mode
- UBA.chm – the standard UBA5 help file
- Lilon Battery Test.bar – A Lithium-ion Battery Analysis Routine (BAR)
- BARTemplate.bar – default values if you want to design your own BAR
- SimulatedUBA.cal – the calibration file for a standard UBA5

First start the UBA software by running UBA5.exe. You should get this:



Note the "no install mode" comment in the Caption and "SIM1" instead of "COM1".

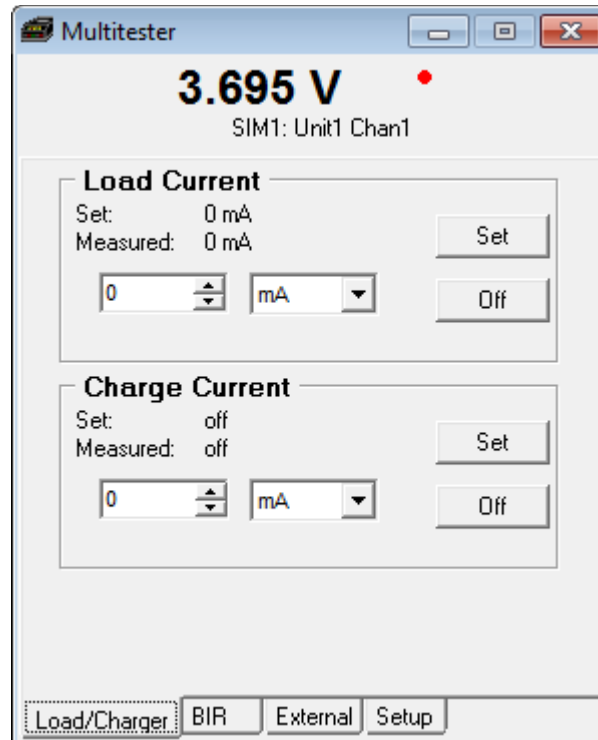
First let's start a Multitester that allows you to measure the (simulated) battery voltage and turn on the load or charger. You can either start it by clicking on the Multitester icon or on a UBA channel and then the **Start a Multitester** button as shown below:



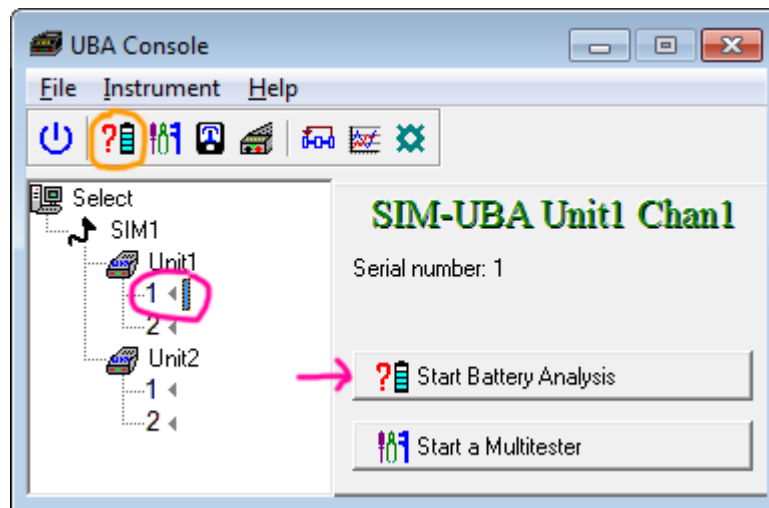
You should get this window:

The simulated battery starts off with a voltage of 3.695V. You can fill in a load or charge current, then click the **Set** button to start the charge or load.

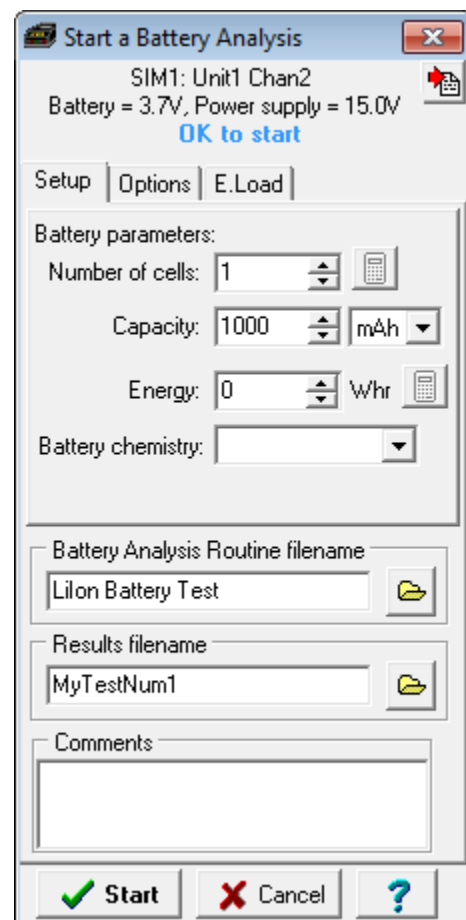
The battery voltage will then start to rise (for charge) or drop (for a load current) at a rate proportional to 1V per 10min for a 1A current.



Now close the Multitester window and start a battery analyzer by either clicking on the battery analyzer icon which starts a battery analyzer on the first free channel or by clicking on a UBA channel and then click the **Start Battery Analysis** button which starts an analysis on the selected channel.

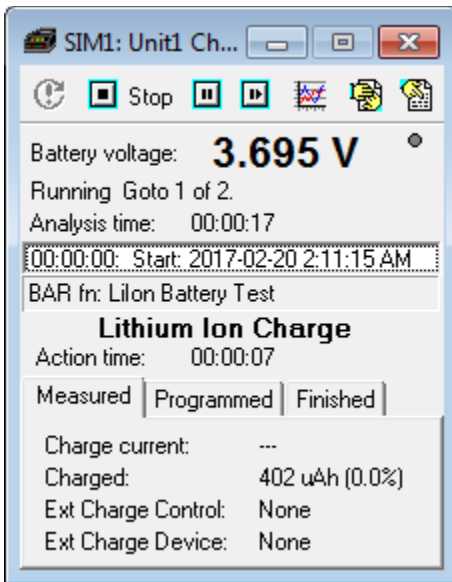



You'll then get this which we've filled in as follows:



For Battery Analysis Routine filename: you can just click on the folder icon and select "LiIon Battery Test" then click the Start button

You should then see something like this after a few seconds:



Click the results graph button  to get a display of the progress.

Have fun and play with it.

When you're done, close the program and it will remove anything it wrote to the Windows Registry, but will save any your results files and any BARs that you made.

For more information, see the help file (click F1 or any help button).

If the help doesn't display, it might be locked as security protection. To unblock it simply right-click on the **CHM** file in explorer and select the 'Properties' menu item: Then, click the '**Unblock**' button near the bottom of the properties page:.

If you have any questions or wish to place an order, contact us at:

www.vencon.com

sales@vencon.com